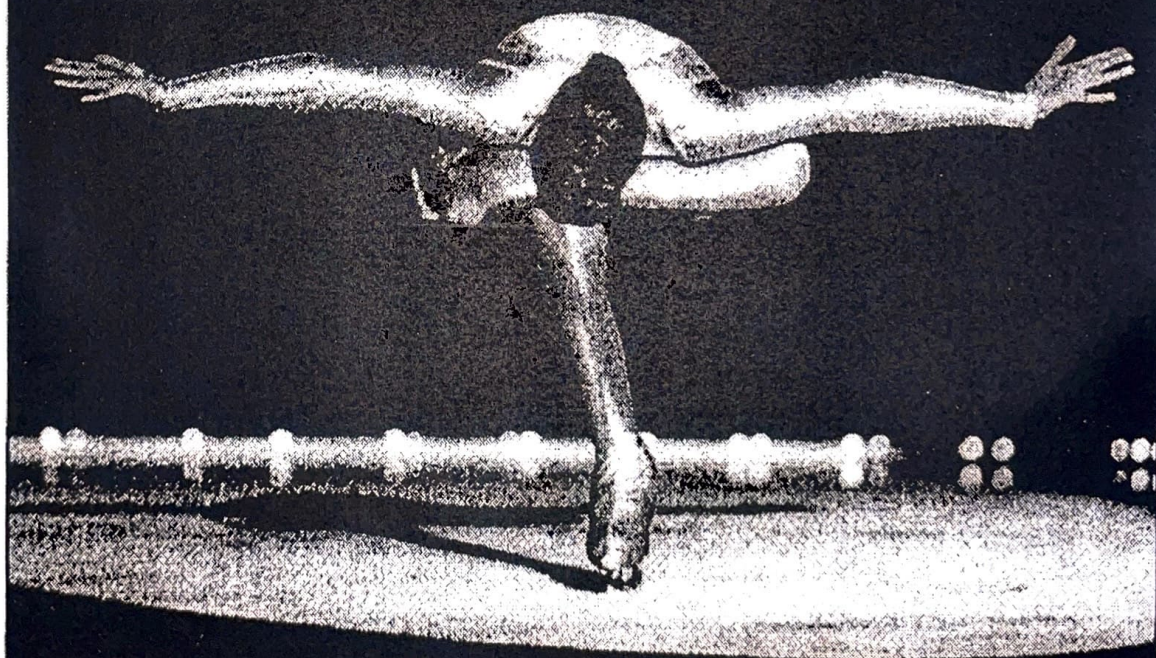


Ice Theatre of New York

Home Season 2001

November 7th, 8th, & 9th, 2001



*We pause to remember,
but resolve to go on.*

— The New York Times

Sky Rink at Chelsea Piers | Pier 62 | 23rd Street & the Hudson River



ABOUT ICE THEATRE OF NEW YORK

Ice Theatre of New York is dedicated to develop ice skating as a performing art through its performances and educational program. It has created an environment in which professional skaters from various backgrounds can collaborate with choreographers, musicians, writers, and visual artists to create and perform new works. Ice Theatre is the nation's first not-for-profit ice dancing ensemble to be awarded grants by The National Endowment for the Arts and The New York State Council on the Arts as a dance company.

Founded by Moira North in 1984, the Company has created a repertory of over sixty works that includes choreography by major modern dance choreographers such as Ann Carlson, Laura Dean, Alberto Del Saz, Donlin Foreman, David Dorfman, Lar Lubovitch, JoAnna Mendl Shaw and Elisa Monte, as well as works by ice choreographers. The repertory ranges from 12-skater ensemble dances to solos, duets and trios, with music from classical to contemporary. Among renowned guest artists who have performed with Ice Theatre are John Curry, Toller Cranston, Paul Wylie, Nancy Kerrigan, Maya Usova and Alexander Zhulin, Judy Blumberg and Michael Siebert, Gary Beacom and Katherine Healy.

Some distinctive projects that Ice Theatre has participated in are *Montreal Fashions on Ice*, an annual show featuring unique styles from Montreal at Rockefeller Center, and *Winter Solstice on Ice*, a TV production shot in Finland and aired by A&E. Ice Theatre has been produced by major dance presenters including Boston's Dance Umbrella, Vermont's Flynn Theatre, Dancing in the Streets, Creative Time, First Night Annapolis, and in Europe. The Company also performs on proscenium stages in addition to the traditional rink settings.

Outreach programs include a *Lunchtime Concert Series* at the rink at Rockefeller Plaza, free to the public. Another program, *New Works and Young Artist Series* at Riverbank State Park in Harlem, is dedicated to giving emerging choreographers and young performers an opportunity to present new works to audiences of school children from the area. Ice Theatre also conducts *Learn to Ice Dance* classes for New York City public school children. The students are taught the basics of skating and dance, with an emphasis placed on full body awareness, musicality, proper stretching and strengthening techniques, and performance skills, working toward physically aware and interesting young artists/athletes. The Company has also performed and conducted master classes throughout the United States and Canada.

Cover: Lucinda Ruh by Diane Bidermann



A NOTE FROM THE DIRECTOR

Welcome to the Ice Theatre of New York's first performance of the 2001-2002 season! Since its founding in 1984, my vision has been to offer audiences a repertory that embodies a rich variety of moods, styles and choreographic forms that make frozen water a stage.

Against the tragic backdrop of the World Trade Center disaster, we have all faced new personal and professional challenges. In terms of tonight's performances, due to circumstances beyond our control, we were unable to bring together a number of our principal ensemble performers, whom you have enjoyed over the past three years. This is why several of our intended "larger" works will not be shown at this time.

On the other hand, we have added several new accomplished professionals and two new apprentices to the company. We have also created several very interesting new works by both dance and ice choreographers during our recent three-week residency in Glens Falls, New York. This residency, made possible in part by public funds from the New York State Council on the Arts, was met with enthusiasm by the skaters, dancers and residents of Glens Falls and Saratoga, for which we are most grateful.

Joining us as guests this year are internationally recognized artists Lucinda Ruh, Marat and Marina Akbarov, and David Liu. I hope that you will enjoy this evening of artistic skating and invite you to glide with us into another year of innovations on ice.

Moira North
Founder/ Director

Ice Theatre of New York

18th ANNUAL HOME SEASON PERFORMANCES November 7, 8 and 9, 2001 at 7PM

ARTISTIC DIRECTOR

Moira North

ASSOCIATE ARTISTIC DIRECTOR

Doug Webster

ENSEMBLE DIRECTOR

Judy Blumberg

GENERAL MANAGER

Michiko Simanjuntak

THE ENSEMBLE

Tyrrell Cockrum, Anna Goehner, Eddie Gornik,
Florentine Houdiniere, Angela Kim, David Liu, Jessica Randall,
Alyssa Stith, Joy Thomas, Susan Pereira Wilsey

GUEST ARTISTS

Lucinda Ruh

Marina and Marat Akbarov

David Liu

LIGHTING DESIGNER

David Lander

PRODUCTION MANAGER

Bruce Roberts

The Program

LA RÉVOLTÉ DES ENFANTS

Music Renee Aubry

Choreography Alberto Del Saz

Performers Jessica Randall, Alyssa Stith and Joy Thomas

This piece is an experimental study of the depth and tonalities of space, within the limitations of the force of expansion. *This work is made possible, in part, with commissioning funds from the New York State Council on the Arts.*

REQUIEM

Music Ragnar Grippe

Choreography Johan Renvall

Performers Eddie Gornik, Florentine Houdiniere
and Angela Kim

An exploration of the power and passion of individuals in movement, the piece juxtaposes technical skating skills and the sensitivity of the operatic music. *This work is made possible, in part, with commissioning funds from the New York State Council on the Arts.*

THINK!

Music Aretha Franklin

Choreography Kurt Browning

Performer Lucinda Ruh

SISTERS

Music The soundtrack of *Amistad*

Choreography/Performers Alyssa Stith and Joy Thomas

A tribute to the Middle Passage, this piece portrays the emotional journey of two women separated by slavery and ends in jubilant reconciliation.

MY BABY YOU...

Music Marc Anthony

Choreography/Performers Marina and Marat Akbarov

RITUAL IN 7'S

Music Geoff Bennett

Choreography JoAnna Mendl Shaw and David Liu

Performer David Liu

A businessman's brief escape from the urban jungle and the clockwork doldrums of a 9-to-5 workday.

ONCE AGAIN

Music Cam Millar

Choreography Heather Harrington

Performers Tyrrell Cockrum and Alyssa Stith

The duet examines the interplay of male-female dominance and dependence. Alternating between tenderness and indifference edged with a darker emotion of hate, the couple plays a game reminiscent of circling flamenco passion play that eventually comes to a resolution. *This work is made possible, in part, with commissioning funds from the New York State Council on the Arts*

DO DA DAY

Music Adiemus, Karl Jenkins
Choreography David Liu
Performers Anna Goehner, Florentine Houdiniere,
Angela Kim, Jessica Randall, Joy Thomas
and Susan Pereira Wilsey

A "rectangular dance" for 6.

TRIBUTE TO TOLLER CRANSTON

Music Michael Crawford
Choreography Toller Cranston
Performer Lucinda Ruh

ADAGIO

Music Lara Fabian
Choreography/Performers Marina and Marat Akbarov

GERSHWIN THEME

Music Gershwin
Choreography JoJo Starbuck
Performer David Liu

DEPARTURES

Music Gustav Mahler
Choreography Douglas Webster
Performers Anna Goehner, Florentine Houdiniere,
Angela Kim, Jessica Randall, Joy Thomas
and Susan Pereira Wilsey

May we be courageous and know that there is a better place
May we always reach for the hand that will lift us out of our suffering
May we also remember to extend a hand to those who suffer
Let us be compassionate to all souls, for then our wings may open
And perhaps we will fly without fear and ascend in flight with the angels

*In memoriam: Clarin Schwartz**

**Clarin Schwartz incorporated Ice Theatre of New York pro bono in 1984, and is among the missing in the World Trade Center disaster.*

About the Artists

MARINA AND MARAT AKBAROV have been involved in the competitive and professional worlds of figure skating for more than 30 years. Now married, the couple has known one another since childhood. With a former partner, Marina was the USSR Pairs Gold Medallist three times, as well as winning bronze and silver medals in European and World championships. With his former pairs partner, Marat was also a USSR Gold Medallist, as well as having been Junior World Champion and European Bronze Medallist. Since they ended their competitive careers, they have skated together professionally, appearing in such *Disney on Ice* productions as *Beauty and the Beast* and *The Lion King*, and *Russian All Stars* productions of *Phantom of the Opera* and *Cinderella on Ice*.

JUDY BLUMBERG (Ensemble Director) has been a presence in the figure skating world for the past 18 years in a variety of different roles: that of performer, coach, commentator, consultant, and inspirational speaker. Judy and former partner Michael Seibert are recognized worldwide as one of the most unique and innovative teams in the history of ice dancing. They were the five-time US Ice Dance Champions, three-time World Bronze medalists and two-time Olympic Team Members. They also hold numerous United States, International and World Professional Championship titles. Being inducted into the US Figure Skating Hall of Fame in 1996 was yet another memorable moment for this duo. More recently, however, Judy has completed her BS Degree at Hunter College concentrating in the area of Human Movement Studies, and has been busy creating new magic on the ice with friend and colleague, Doug Webster. One won't soon forget their breathtaking duet in the debut of Webster's and Shaw's *Appalachia Waltz* in June of 1997. Judy's dance expertise was crucial in translating Peter DiFalco's *Tango*, from the floor to the ice. Together, Judy and Doug, with their keen eye for detail and years of performing experience between them, co-direct the Ice Theatre of New York Ensemble. In addition to her work with Ice Theatre, Judy has served on the Board of Directors of the USFSA, the new Professional Skater's Cooperative, and the Athlete Advisory Council of the USOC.

TYRRELL COCKRUM started dancing at the age of three, which then led him into a career of figure skating. For the past 11 years, Tyrrell has trained as an ice dancer, competing at the National level for three years and at the Junior Olympic level for two years. Continuing his cross-training, he studies and performs jazz, ballet, modern and ballroom dancing. Tyrrell has just recently relocated to the New York City area from Seattle, Washington in hopes of working with Ice Theatre, pursuing his teaching and exploring his options on Broadway.

ALBERTO DEL SAZ (Choreographer) began his performing career as an ice skater, became the Spanish National Champion in figure skating in 1980 and then joined *Holiday on Ice*. It was after moving to New York in 1983 that he was inspired to study dance. His early dance training was at the Nikolais/ Louis Dance Lab, by the great figures of modern dance such as Hanya Holm, Alwin Nikolais, and Murray Louis. In 1985 he made his debut as a lead soloist with the Nikolais Dance Theater (later renamed the Murray Louis and Nikolais Dance Company). Mr. Del Saz has toured worldwide, taught master classes at various US universities and set repertory work in university dance departments, including The Juilliard School, The Joffrey Ballet of Chicago, Ballet Met, North Carolina School of the Arts, and Boston Conservatory among others. He has appeared in a CBS telecast featuring the Nikolais Dance Theater, as well as on PBS American Masters series in *"Nik and Murray,"* an award winning documentary film by

Christian Blackwood. In 1990 Mr. Del Saz went to Japan where he appeared as a guest artist in "V," a project by Mr. Ushio Amagatsu, Artistic Director of Sankai Juku. In 1997, he danced Rudolf Nureyev's role in *Moments*. He has also represented the United States State Department on a tour of India, appeared at the Paris Opera Garnier in a *Homage to Alwin Nikolais* and at the Next Wave Festival with Bill T. Jones and Arnie Zane Dance Company. Mr. Del Saz is now the Co-Artistic Director, Co-Reconstruction Director and Rehearsal Director of the Murray Louis and Nikolais Dance Company. Having been with the Nikolais/Louis Foundation for 17 years, he now focuses on preserving the Nikolais/Louis technique and legacy and to create a significant body of work of his own choreography. Mr. Del Saz is also currently choreographing for bronze medalist figure skater Nicole Bobek and Olympic bronze medalist Phillippe Candeloro. His works on ice have been featured in *Ice Wars*, *Grand Slam* and the Professional World Championships televised on CBS, FOX and ABC networks as well as the official opening of the Rockefeller Center, sponsored by Champions on Ice.

ANNA GOEHNER (Apprentice) is a Gold Dancer with a strong ballet background. She is coached by Alexandre Chichkov and has taken workshops with Ice Capades and Natalia Dubova. With a BFA from Cornell University, Anna presented a thesis installation conveying skating as an art form different from the way it is portrayed by the conventional media. A member of the Professional Skating Association, Anna loves teaching group/private lessons and creative movement classes.

EDDIE GORNIK was born and raised in Salt Lake City, Utah and is a 6-time US National competitor. He was privileged to have studied with coaches such as Frank Carroll, Irina Rodnina, Evelyn Kramer and Kathy Casey. Most recently, Eddie held the lead role for Disney on Ice's *Toys Story* from 1996 to 2001. He is now very excited to take his skating into a more serious and artistic realm with Ice Theatre of New York.

HEATHER HARRINGTON (Choreographer) is a dancer, choreographer, and figure skater. She graduated from Boston University with a degree in psychology. She moved to New York City and danced with the Doris Humphrey Repertory Company, the Martha Graham Ensemble, the Pearl Lang Dance Theater, and the Bella Lewitzky Dance Company. Her choreography has been presented by various venues including: *Newsteps* at Mulberry Street Theater; *Fresh Tracks* at Dance Theater Workshop; the Yard; *Dancenow* at the Joyce Soho; University Settlement; *New Stuff* at P.S. 122; the American Dance Guild Presents at Hunter College and the Kempsville Playhouse; the Merce Cunningham Studio; *Dancing in the Streets* at Wave Hill; *Under Exposed* at Dixon Place; the Toronto Fringe Festival; and the Downtown Dance Festival at Battery Park. As a figure skater Harrington has performed with the Ice Theatre of New York and *Freezer Burn*. She is currently a coach at Sky Rink, Chelsea Piers.

FLORENTINE HOUDINIÈRE, born and raised in France, earned Gold at the French Junior National Championships in 1992 and competed in numerous international competitions. She was a member of the French National team for 5 years. In 1995 she turned professional, and has traveled internationally ever since. She was the lead role in the Holiday on Ice's 1999/2000 European Tour of *Colours of Dance* and was a principal skater of *Broadway on Ice* at the Andy Williams Moon River Theatre in Summer 2000. She performed as Anastasia in the US tour of *Anastasia on Ice*; Cruella De Vil in the *Disney 15* show during the summer of 1997; and Belle in the 1996-1998 Disney on Ice production of *Beauty and the Beast*.

ANGELA KIM (apprentice) from Portland, Oregon has been skating for 13 years and has competed for 10 years under the training of coaches Dody Teachman and John Thomas among others. She has passed Junior moves/freestyle tests and Silver Dance. She teaches group lessons and enjoys working with kids. Angela has had 6 years of ballet, and is interested in pursuing dance. She is in the process of getting her Pilates certification.

DAVID LANDER (Lighting Designer) is in his sixth year in collaboration with the Ice Theatre of New York. His experience with theatrical lighting is extensive, including lighting Broadway's *Dirty BLONDE* (2000 Drama Desk Nomination) and David Henry Hwang's production of *Golden Child*, both directed by James Lapine; and *MythologyJAZZ* at the New Victory Theater. He has designed lighting for off-Broadway productions of *Dirty BLONDE* at the New York Theatre Workshop; *Grandma Sylvia's Funeral*. His regional theatre experience includes *Venecia*, starring Chita Rivera under the direction of Arthur Laurents at the George Street Playhouse; *Closer* at the Cincinnati Playhouse in the Park; *Fiddler on the Roof* at Utah's own Sundance; *The Cherry Orchard* at the New Harmony Theater, directed by Louis Zorich; and the *Golden Child* production at the Kennedy Center, Singapore Repertory, South Coast Repertory and ACT. He was also the associate lighting designer for Broadway's *A Doll's House*, *Cabaret* at Studio 54, and off-Broadway production of *A New Brain*.

DAVID LIU (Skater, Choreographer) mesmerized the international figure skating crowd at the 1992 Winter Olympic Games in Albertville, France. Artistry has always been David's strong point due largely to his extensive dance training from an early age. George Balanchine of New York City Ballet took notice of his talent and placed him in a prestigious and accelerated class at the School of American Ballet on full scholarship. He has performed in the School of American Ballet's Annual Workshop, and at New York City's Lincoln Center. Recently at the Hong Kong Arts Festival 2000, he performed in City Contemporary Dance Company's production of *Plaza X*, H.T. Chen's *Moon* at the Joyce Theatre in New York City and Architzanz's *In the City of Swans* in Tokyo. As an actor, David has performed in Yangtze Repertory Company's production of *Thunderstorm*, a classic Chinese play. David has choreographed most recently *3's A Game, Now 4 Play* (a ballet for Dancing into the New Century - Choreographic Workshop 2000 for the Hong Kong Ballet) and a new work for CCDC's *Strip Teaser*, an exciting collaboration with Hong Kong fashion designers. His past works include the dance sequences in the off-off Broadway production of *The Life and Times of Ng Chung-yin*, Ice Theatre of New York's *Deflecting Demons* and *Reflexions!* (a ballet for three at the Pace Downtown Theater).

MOIRA NORTH (Founder/ Director), named one of the 25 Most Influential Names in Figure Skating by International Figure Skating Magazine in 1998, has been a driving force in the development of figure skating as a performing art. Since founding Ice Theatre of New York in 1984, She has been a catalyst in the development of other artistic ice skating companies in both Canada and the US. Moira and partner Patrick Dean skated Ice Theatre's first work, a collaboration with dance choreographer Marc Bogaerts which won them first place in the 1984 Professional Championships in Jaca, Spain. In her subsequent work as Ice Theatre of New York's Artistic Director, Moira has continued to integrate contemporary dance into the repertory of ice choreography. She has studied several dance forms, including the Martha Graham technique, Japanese Butoh with Sankai Juku, and Haitian and African dance. Moira is a member of the Professional Teaching Staff at Sky Rink/ Chelsea Piers, and previously served as co-director of the Sky Rink Skating School. Moira's artistic

credits include working with actress Ileana Douglas in her skating role in the film *To Die For*, teaching and choreographing a skating scene in the film *The Preacher's Wife* with Whitney Houston and Denzel Washington; choreographing five productions of *Montreal Fashions on Ice* for the Quebec Delegation at Rockefeller Plaza; and choreographing the opening ceremonies for both the National Hockey League All-Stars Game and World Cup Hockey. She also served as the creative consultant for Arts & Entertainment's *Winter Solstice on Ice*, a television special aired during the 1999 holiday season.

JESSICA RANDALL is happy to be back on the ice with the Ice Theatre of New York since first appearing with them in 1999. From a family of hockey players and figure skaters, Jessica has been on the ice since the age of two. Jessica has skated and performed all around the world, including working with Disney on Ice, Australian International Entertainment in Dubai and in United Arab Emirates, Greg Wittrock's *Freezer Burn*, and most recently performing for Ice Theatre of New York debut tour in Italy. She has also toured the United States and United Arab Emirates as wardrobe assistant for Radio City Entertainment and *Pokemon Live*.

JOHAN RENVALL (Choreographer) began his career in 1972 when he was admitted to the Royal Swedish Ballet School. He later became a member of the prestigious Royal Swedish Ballet. In 1978, he joined American Ballet Theatre and that same year, he was chosen by Anthony Tudor to dance the leading roles in two of his ballets *Undertow* and *Shadowplay*. After only three years, Mr. Renvall was promoted to soloist for the company, and in 1987 was promoted to the rank of principal dancer. He held this position until he retired in 1996. In addition to being known for his bravura dancing and dramatic sensitivity, Mr. Renvall is also an accomplished choreographer who has received both critical and audience acclaim. He made his choreographic debut with an abridged version of *Romeo and Juliet* at the Aspen Ballet Festival in 1984. Since then Mr. Renvall has choreographed an array of ballets including *Tango*, which premiered at the Jacob's Pillow Dance Festival in 1990. His other works include *Persnickety* (1987), *Between the Lines* (1984), and *Perpetual Cycles* (1996) for the New Jersey Ballet. He also choreographed *Cinderella* (1996) for the Alabama Ballet. Mr. Renvall's career accomplishments also include the coveted Silver Medal at the prestigious International Ballet Competition at Varna, Bulgaria, as well as the leading role in the feature film *Dance*. Prior to launching his career as a ballet dancer, Mr. Renvall was a figure skater who won both the Swedish and Scandinavian championships.

LUCINDA RUH is originally from Zurich, Switzerland and lived internationally in cities such as Paris, Tokyo, Toronto, San Francisco, Harbin (China) and Beijing. She started skating at age five and is now considered one of the finest spinners in the world (her 270 revolutions per minute have earned her the nickname "Queen of Spin"). She also studied classical ballet as a child. When she was 17 years old, she moved to Toronto, Canada to work with Toller Cranston on choreography and with Ellen Burka on jumping technique. After about a year in Canada, they moved to San Francisco to work with Christy Ness. Lucinda made rapid progress and placed 15th at the 1997 Worlds in Switzerland. In 1999, Lucinda returned to Switzerland and started to work with Oliver Hönér. Her excellent performances at the 1999 World Championships in Helsinki were the highlight of the 1998/99 season, and her elaborate, intricate spins made her an audience favorite. After Worlds, Lucinda was invited to tour with the *German Stars on Ice*. Lucinda's electric performance at the 2000 World Professional Championships in Washington, D.C. netted her a standing ovation from the crowd, a third place finish and further confirmed her place in the top echelon of professional skaters. Indeed, Lucinda was recently named as one of *International Figure Skating Magazine's* top 25 "Most Influential" people in skating.

JOANNA MENDEL SHAW (Choreographer) is a choreographer, teacher and movement coach. She has choreographed for gymnasts, ice skaters and equestrians and produces unusual partnerships for dancers and athletes. JoAnna's dance choreography has been presented in New York at Dance Theatre Workshop, St. Mark's, Joyce SOHO and the 92nd Street Y. She has created four works for Ice Theatre including *Appalachia Waltz*, which she co-choreographed with Doug Webster. Known for her site-specific works, JoAnna is developing a unique form equestrian/dance theatre for dancers horses and riders. She is the recipient of two NEA Choreographic Fellowships. JoAnna has taught on the faculty at University of Washington, NYU, Princeton, Mount Holyoke and currently at The Alley School and Montclair State. Her international teaching includes residencies in Switzerland and Hungary, Scotland, Wales and Korea.

ALYSSA STITH is a graduate of Ohio State University, having earned her BA with distinction in dance. She skated for thirteen years, earning her Senior Figure and Junior Freeskating Tests. She also toured with the Living the Dream Theatre Company. She is currently helping direct Ice Theatre's Sports & Arts in School program, as well as performing with the company.

JOY THOMAS, a USFSA Ice Dance Gold Medallist, is currently performing with Ice Theatre of New York and has been teaching skating for several years. Recently, she toured in Italy with the 2001 Italian Tour of Champions, where she performed her self-created piece, "Sisters." Joy has been a guest skater with Jo Jo Starbuck's Productions at Rockefeller Center and in numerous shows in Lake Placid with Dorothy Hamill and Tara Lipinski. She has appeared in television in promotional spots as an ice skating model for *Montreal Fashions on Ice*. Joy, both a freestylist and ice dancer, was chosen to compete in a USFSA international dance competition. And Joy was Whitney Houston's ice skating double in the movie, *The Preacher's Wife*.

DOUGLAS WEBSTER (Associate Artistic Director) has coached skaters on the National, International, and Professional level, including Lucinda Ruh's professional debut at the World Professional Championships. As a choreographer, Douglas has worked with wonderful skaters such as Lu Chen, Elena Leonova and Andrei Khvalko, Elena Leichenko, and Lucinda Ruh. He has developed a *Theatre on Ice* program for the Skating Club of New York, taught edge and theatre class seminars around the country, choreographed for the television special *Winter Solstice on Ice* through Ice Theatre of New York, and had the opportunity to translate many wonderful dance choreographers works to the ice including Elisa Monte, Ann Carlson, and Johan Renvall. As a skater, Douglas was coached by Audrey Weisiger and competed at the National level. He then very happily went on to partner Judy Blumberg in a portion of her professional career. Currently, Douglas resides in Salt Lake City, and is also the Associate Artistic Director at the Salt Lake SportsComplex. Douglas has a keen interest in bio-mechanics, kinesiology, and yoga, and with Stephanie Grosscup of the SportsComplex has helped create and teach two new classes to augment skaters training, *Skadoga Piloga* and *Let It Flow*.

SUSAN PEREIRA WILSEY has been performing with Ice Theatre of New York for 6 years. She has been skating professionally since age 15, performing in ice shows around the world including the Ice Capades, the world-renowned Sun Valley Ice Show, held each summer in Sun Valley, Idaho, the Nancy Kerrigan tour and numerous TV skating specials. In fact, Susan was a featured performer in the *Winter Solstice on Ice*, which was shown in the A&E network last season. She is happy to have glided into New York City where she completed her degree in Art History at Columbia University, and doing what she loves most, skating.



BOARD OF TRUSTEES

William Beekman <i>Chairman</i>	R. Palmer Baker <i>Vice Chairman</i>	Moirra North <i>President</i>	Mary Gaillard <i>Treasurer</i>	Jirina Ribbens <i>Secretary</i>
George Akst		Peter F. Eurich	JoAnna Mendi Shaw	
William J. Candee, III		Kathlin Feuerstein	Jan Staller	
Eri Chiang		James C. Goodale	Adele Hall Sweet	
Chip Connell		Ruth Legon	Debra Lewin Weiner	
Stephen Epstein		Caroline Moore		
Joan Balogh Erdheim		Rhea S. Schwartz		

GUARDIAN ANGELS • \$7,000 OR MORE

Palmer Baker	William Beekman
William J. Candee, III	Lisa Webster

BENEFACTORS • \$2,500 OR MORE

Joan Balogh Erdheim	Denise and Marilena O'Neill	Jan Staller
Kathlin Feuerstein	Lisa & James Pappas	Adele Hall Sweet
Annie Goodman	Joan Scribner	
Debbie & Robert Gordon	Angelo Silveri	

ICE ANGELS • \$1,000 OR MORE

George Akst	Stephen Epstein	Rhea Schwartz & Paul Woolfe
Eri Chiang	Peter Eurich	Nancy & Frank Streeter
Leonard & Janet Connolly	Ruth Legon	Richard Struse
Sonja Corbin	Dr. & Mrs. Vincent Madonia	Madalyn & Stephen Tobias
Alfred & Bonnie Devendorf	Caroline Moore	Vera Wang
Gaye Ellington	Audrey & Marvin Schein	Debra Weiner

PATRONS • \$500 OR MORE

Mrs. C. Robert Allen, III	Robert & Diane Fagiola	Susan & Bill Pereira
Rose Auslander & Rick Moore	Mary Gaillard	JoAnna Mendi Shaw
Caroline & Fred Bazzini	Susie Gharib	Lee & Marvin Traub
Mr. & Mrs. Theodore Danforth	Susan & Charles Harris	Gertrude C. Vanderbilt
Sonya & Peter Dunfield	Deborah & Frank Hudak	Narissa & Wynne Weiner
Julie & Robert Dustin	Joan Kaufmann	Betsy & Doug Wilson
Violet & Christopher Eagan	Soon Im Kim	
Dr. & Mrs. Steven Erlanger	Mr. & Mrs. David Klopp	

SPONSORS • \$250 OR MORE

J. Bryan Anthony	Jacob Peter Kovner	Steven Sclaroff
Jack Batman	Melanie Maslow	Ken Shelley
Mr. & Mrs. Rolla D. Campbell	Denise Melikian	Erwin & Freddie Staller
Christopher Castroviejo	Theresa Mullarkey	Aja Zanova Steindler
Rebecca Clifford	Barton Nisonson	Dr. Yohannes Syoum
Chip Connell	Carl Olsson	Linda & David Tewksbury
Mary Eagan	Sarah Peter	Sally & Stanley Urban
Susan & Charles Harris	Nancy Quaife	Helen Victor
Jennifer Jordan	Jirina Ribbens	Joan Wilson
Sandra Loosemore	Maureen & Jim Robertson	

FRIENDS • \$100 OR MORE

Ruby & Priscilla Andrade	Lucia Hwang	Olga Malinova
Magdelaine S. Anthony	Charlotte Thorp	Lynn Rutherford
Jules Birnbaum	Virginia Holden Glover	Earl Samuel
Chris Boeke	Mimi Gross	Tracy Watts
Barbara Camp	Frances Johnson	Soon-Young Yoon
Enid Coleman	Dorothy Katz	
Wendy Frank	Gail Maldman	

ASSOCIATES • \$50 OR MORE

Virginia Abrams	Reiko Ehrman	Richard Mooney
Stephen Adler	Hans Gerschwiller	Gabrielle Paolini
Marilyn Andretta	James Grad	Mary Rubin
Martha C. Baumeister	Myrna B. Hurwitz	Rikki Samuels
Shirley Berkowitz	Betsy Hauck	Patricia Schmidt
Margery Bloom	Prescott Jennings, Jr. Esq	Margaret Shields
John Bohan	W. Macy Johnson	Barbara Ann Stay
Barbara Brown	Terri Katz	Margaret S. Williamson
M. Van Buren Brown	Shirley Loedel	Robert Winter
Budnitsky	Carter Anne McGowan	Anne Wyman
Donald Cardoza	Claude Mellins	

PHILIP MORRIS
COMPANIES INC.



For their special efforts, Ice Theatre of New York expresses its deepest gratitude and appreciation to:

Chelsea Piers and Sky Rink

Ron Talerico, General Manager • Sky Rink
Sid Morgan, Assistant General Manager • Sky Rink
Abe Hernandez, Head of Maintenance • Sky Rink

Jack W. Batman, Director of Public Relations • Chelsea Piers

Field House • Chelsea Piers

Sports Center • Chelsea Piers

Priscilla Andrade
Ruby Andrade
Robert Bass
Angela Chiang
Jessica Chiang
Cara Erdheim
Ruth Feingold
Betsy de Felice
Andrea Diamond
Bev Hasiuk

Beth Hurwitz
Carter Anne McGowan
Marylyn Meyerson
Gall Mitchell
Joyce Mola
Ruth Rosenberg
Students of JoAnna Mendl Shaw
Nancy Switkes
Adrienne Watkins
Sally & Bob Winter

Special thanks to

Paul Schwartz
Scott Schwartz
LeAnn Yee

and the generous members
of the Board of Directors of
Ice Theatre of New York

And special thanks to the members of the Board of Directors of INTY.

Ice Theatre of New York Greatly appreciates support from:

Abigail H. Hers Interiors, Inc.
Akst & Akst
Arne Gems & Jewels, Ltd.
The Baker Company
Canadian Consulate General
Carter, Ledyard & Milburn
CIBC World Markets
Control Associates
Debevoise & Plimpton
Del Arbour LLC
Desco
Devon Management
Doug Wilson Enterprises, Inc.
Eclipse Design
Fleet
Forbes
Forest Laboratories, Inc.
Fotocare, Ltd.
Hird Blaker, Inc.

Ice House
IMG
Insignia/ESG
International Figure
Skating Magazine
Iris and Saul Katz Family
Foundation
Joan Kaufmann Interiors
Listerline
Lisa McGraw Figure
Skating Foundation
Litho Partner
Merrill Lynch
Morrison & Foerster
New York City Department
of Cultural Affairs
New York Rangers
New York State Council
of the Arts

Nu Skin
Phillip Morris
P.J. Mechanical Corporation
Quebec Government
Rivkin Radler LLP
Ruskin, Moscou, Evan
and Faltischek, P.C.
Silverite Construction
Skating Club of New York
Sky Rink, Chelsea Piers
Sports and Arts in
Schools Foundation
TXX Services, Inc.
Vera Wang
WEMPE/ Rolex
Xtreme Ice
Zimmerman Agency

Matching gifts from:
IBM International Time Warner, Inc.

And contributions from all of our generous individual contributors!

This event is made possible by public funds from the New York State Council on the Arts,
a state agency and by public funds from the NYC Department of Cultural Affairs.



**18TH ANNUAL HOME SEASON PERFORMANCES
ICE THEATRE OF NEW YORK, INC.**

Chelsea Piers, Pier 62, Room 312
New York 10011 • 212.929.5811 • 212.929.0105 FAX
www.icetheatre.org • ltny@icetheatre.org

FOUNDER/DIRECTOR
Moira North

PRODUCTION MANAGER
Bruce Roberts

ENSEMBLE DIRECTORS
Judy Blumberg
Doug Webster

STAGE MANAGER
Paul Schwartz

THE ENSEMBLE
Tyrrell Cockrum
Anna Goehner
Eddie Gornik

PRODUCTION ELECTRICIAN
John Anselmo Jr.

Florentine Houdiniere
Angela Kim
David Liu
Jessica Randall
Alyssa Stith
Joy Thomas
Susan Pereira Wilsey

LIGHT BOARD OPERATOR
Kristopher Keeley

FOLLOW SPOT OPERATORS
Christopher Akins
Andrew Baldwin-Merriweather
Dan Hansell

GUEST ARTISTS
Lucinda Ruh
Marat & Marina Akbarov
David Liu

ELECTRICIANS
Christopher Akins
Andrew Baldwin-Merriweather
Dan Hansell
Susanna Harris
Aaron Mason

GENERAL MANAGER
Michiko Simanjuntak

John D. Mulkey
Dean Radinovsky
Ian Savage
Katharine Schist

COORDINATOR
LeAnn Yee

LIGHTING EQUIPMENT
Fourth Phase

LIGHTING DESIGN
David Lander

VIDEOGRAPHY
Anthony Seva

*Ice
Theatre
of
New York*

