



2007
Annual Gala

honoring
Sarah
Kawahara

*Ice
Theatre
of
New York*





THE CITY OF NEW YORK
OFFICE OF THE MAYOR
NEW YORK, N.Y. 10007

October 29, 2007

Dear Friends:

Welcome to a performance and benefit gala in honor of Sarah Kawahara, hosted by the Ice Theatre of New York.

It is a pleasure to join my voice with all those praising this innovative and skilled choreographer. As home to the Yankees, the U.S. Open, and a world-famous marathon, our City is the sports capital of the world – so we are especially appreciative of Kawahara's work to create incredible programs for Michelle Kwan, Dorothy Mill, Scott Hamilton, and others. We are a truly international metropolis, where 170 languages are spoken – so we were in a unique position to enjoy the 2002 Olympic Ceremonies, which she choreographed. Finally, we are home to a bustling film and television industry – so we loved her work on the Will Ferrell comedy *Blades of Glory*.

Since its establishment in 1984, the Ice Theatre of New York has combined the best of ice skating, dance, and theater to create cutting-edge performances – such as the one you'll all enjoy tonight – that represent the very best New York's creative community has to offer. This event is a great opportunity to recognize Ms. Kawahara, outgoing board member Peter Eurich, and all those who have contributed to the theater's success, while also raising the funds that will ensure even greater achievements on the horizon. On behalf of the City of New York, please accept my best wishes for a wonderful evening.

Sincerely,

A handwritten signature in black ink that reads "Michael R. Bloomberg".

Michael R. Bloomberg
Mayor



Ice Theatre of New York



Ice Theatre of New York is an extraordinary organization, which has, for more than 20 years, changed the face of figure skating, by integrating the sensibilities of the contemporary dance, music and art worlds into performance skating.

Founded in 1984 by Moira North, Ice Theatre of New York is the nation's first not-for-profit ice dancing ensemble to be awarded grants as a dance company by the National Endowment for the Arts, the New York State Council on the Arts and the New York City Department of Cultural Affairs.

In addition to pioneering skating as a performing art, Ice Theatre has also developed diverse performance programs to develop ensemble skaters and educational outreach programs to teach the basics of skating and develop new audiences for dancing on ice.

Outreach programs include the Lunchtime Concert Series at Rockefeller Plaza, and after-work Ice Concerts at Bryant Park, both free to the public: New Works and Young Artists Series at Riverbank State Park, dedicated to presenting present new works and providing free skating clinics for public school students from Harlem and Washington Heights.

“Institutions like [Ice Theatre] are responsible for giving New York City the unparalleled artistic and cultural spirit that has made it the envy of the world.”

— **Vartan Gregorian,**

President of The Carnegie Corporation of New York, June 2007

“Moira North has succeeded in establishing ice dance as a serious art form, in part by attracting grants to support leading modern dance choreographers... Some pieces seem like they would be perfectly at home, at say, Jacob's Pillow.”

— **Jenny Hansell,** from “Learning How to Dance on Ice. A New Art” in Millerton News, April 2007

“Jacquelyn Buglisi, of Buglisi Dance, calls skating ‘another art in the world of movement.’ ‘I thought it was very interesting to try to bring my knowledge of movement through the Graham technique (to the ice). It was an investigation of the creative process.’”

— **Lois Elfman,** from “Fluid Movement” in Dance International Magazine, Winter 2006

Cover Photos: **Alice Berman, Skater's Edge**

WE SALUTE ICE THEATRE OF NEW YORK
AND SARAH KAWAHARA



BEST WISHES FOR ANOTHER GREAT SEASON!

SUSIE GHARIB AND FERAYDOUN NAZEM
ALEXI AND TARANEH



Alicia Ernst & Ken Shelley

Co-Chairs

Scott Hamilton

Honorary Chair & Master of Ceremonies

BENEFIT COMMITTEE

Board of Trustees

George Akst
R. Palmer Baker, Jr.
William Candee, III
Eri Chiang
Chip Connell
Violet Eagan
Joan Erdheim
Alicia Ernst
Kathlin Feuerstein
Mary Gaillard
James Goodale
Stacie Young Krinsky
Ruth Legon
Michel Mercure
Moira North
Susan Numeroff
Guy Robinson
Jan Staller
Missy VanBuren
Debra Lewin Weiner

Staff

Artistic Director/Founder
Moira North

Co-Artistic Director
David Liu

Executive Director
Jirina Ribbens

Production Manager
Carrie Furay

Marketing Director
Melissa Topakbashian

Public Relations
Ellen Jacobs Associates

www.icetheatre.org

Cindy Alcroft
Ginny & James Alcroft
Jamie Alcroft
Karen Bechtel
William Beekman
Stan Belliveau
Jessica Betts
Willy Bietak & Cathy Steele
Roy Blakey
Judy Blumberg
Brian Boitano
Lucy Joyce Brennan
Kurt Browning
Dick Button
Keith Champagne
Sharon Chantilles
Tom Collins
Robin Cousins
Sonya & Peter Dunfield
Richard Dwyer
Mary Eagan
Kenneth Feld
Peggy Fleming

Lyn Fontanella
Randy Gardner
Susie Gharib
Ann Goodman
Stephanee Grosscup
Amy & John Hughes
Marilyn & Joseph Kasputys
Barbara Ann Scott King
Sachi & Denise Kuchiki
Michelle Kwan
Randall Lane
Mr. & Mrs. Joe Levine
Terri Levine
Linda Magnuson Rosario
Melanie Maslow
Barnabas McHenry
Kenny Moir
Nina Newby
Joanna Ng
Kenny Ortega
Terry Pagano &
Tony Paul Kudrna
Kane & Jeff Peterson

Lynn Plage
Ken Podziba
Kathy Presto
Elise Preston
Nancy Quaife
Valerie Rosenwasser &
Jim Hoffman
Yuki Saegusa
Angelo Silveri
JoJo Starbuck
Nancy Streeter
Nina Subin
David Tewksbury
Judy & Dave Thomas
Angela Ting
Gary Tinterow
Robin Wagner
Vera Wang
Elizabeth Webster
Curtis Webster &
Jennifer Ortega
Aja Zanova Steindler
Elaine Zayak & John Berg

SPECIAL ACKNOWLEDGMENT

to these individuals and others whom we might have missed

Make up for Ice Theatre of New York
provided by MAC Cosmetics



Special photography of Sarah Kawahara:
Alice Berman/Skater's Edge

Craig Cichy and MAC Cosmetics
Melody Champion
Joyce Mola
Ruth Rosenberg

Scott H. Schwartz, Graphic Design
Jeffrey Shaw, Computer Technician
Stephen Sunderland, Web Designer
Gerri Brioso and Jirina Ribbens, Video

FUNDERS

Carnegie Corporation
Bossak/Heilbron Charitable Foundation
Gertude Vanderbilt Endowment
Lisa McGraw Figure Skating Foundation
Spiegel Family Foundation





The Art of Sarah Kawahara

by EDWARD Z. EPSTEIN

What do Peggy Fleming, Michelle Kwan, JoJo Starbuck, Dorothy Hamill, John Curry, Scott Hamilton, Pang and Tong, the 2002 Olympics, and Will Ferrell — *Will Ferrell?* — have in common? The one and only Sarah Kawahara, who has worked her magic for all of them.

Whether it's creating choreography for an individual or an ensemble, shooting a film or conceiving a concept, Kawahara has never followed the well-traveled road. "She always finds a new way to do things," observes her friend JoJo Starbuck, and it is exciting to watch Sarah work — her energy level is so intense, her movements so interesting, you can't take your eyes off her. All accounts confirm that from the beginning she's had that "something extra" that not

only defines the tasks she undertakes but inspires those she works with to achieve their full potential.

Off the ice, Sarah's ingratiating smile, direct gaze, firm handshake and feminine demeanor bely the fact that she's a dynamo, a thoughtful woman who means business and whose persona is perhaps best described by two words: positive energy.

"My career has been so diverse, I've never been 'saddled' with it, never been 'type-cast,' so to speak. For the most part, I've been happy with the finished product. I always strive for perfection, while realizing it's not available." A sense of humor has proven an asset in a profession that requires virtually superhuman focus, dedication and attention to detail.

She grew up in Montreal; played piano, violin, and dreamed of becoming a ballerina. "Alvin Ailey's work had a big influence on me. I was encouraged to enjoy all the arts — theater, opera, movies. Gene Kelly in 'American in Paris,' and his 'Slaughter on Tenth Avenue' ballet in 'On the Town.' Fred Astaire's work, Cyd Charisse's."

When the family moved to Toronto, "we passed an outdoor ice rink and I wanted to skate. It turned out I was good at it, I loved to jump." The youngster's passion and enthusiasm did not go un-noticed. She trained at the Cricket Club, where her artistic potential was recognized and nurtured by coach Osborne Colson ("Mr. C"). "He was a great source of inspiration and



**THANK YOU FOR THE JOY AND LOVE YOU BRING TO US EVERYDAY.
JAMIE, AYSSE, HAYLEY, THATCHER and HENRY the dog.**

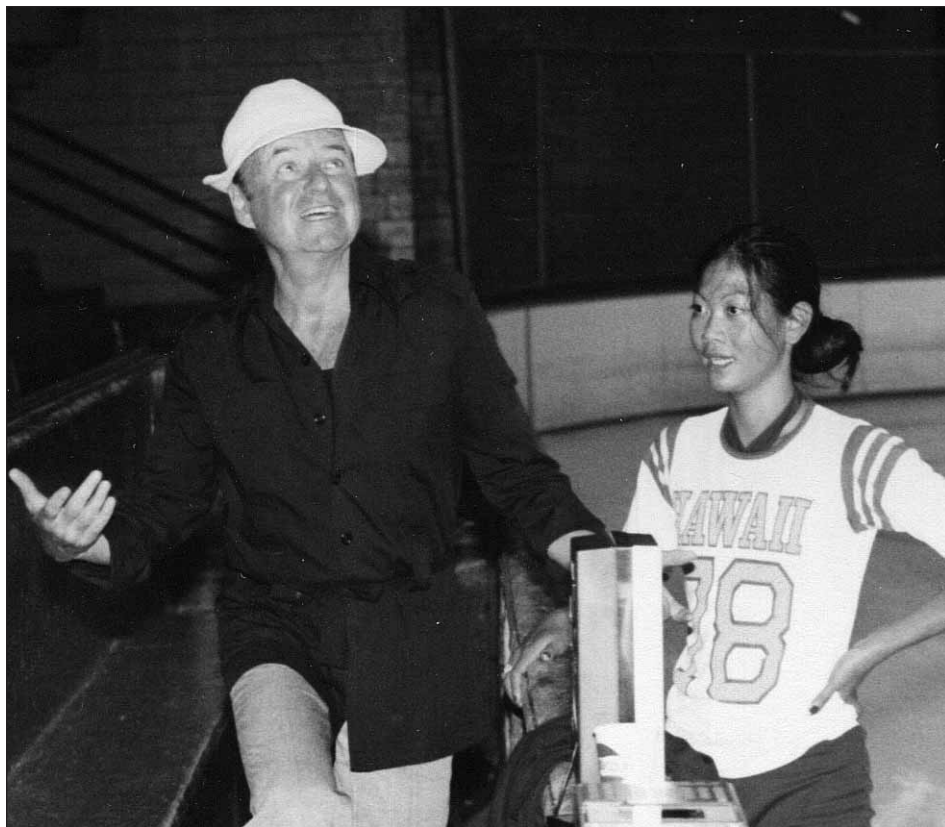
strength," notes Sarah. "He was Sarah's mentor, he unlocked a whole new artistic world for her," notes JoJo Starbuck.

Toller Cranston observed with interest the young Kawahara of these years. With his usual flair, he has described her as "another of the golden guppies spawned by the Cricket Club, an artistic skater with an exceptional brain."

Sarah eventually faced a life-altering decision: "The time came when I had to make a choice: ballet or skating." Although an excellent dancer, she felt she was a better skater, followed her instincts and opted for skating

In the early nineteen-seventies, she joined the famed Ice Capades as a principal skater. She performed a memorable solo in the elaborate opening production number, and those on the scene recall that she was "really something." "I got to express myself in Ice Capades," recalls Sarah, remembering how choreographer Bob Turk "encouraged and guided me."

JoJoStarbuck and her partner, Ken Shelley, former 3-time U.S. National Pairs



Sarah with renowned coach and mentor Osborne Colson.

Congratulations Sarah
for a well deserved honor from your
friends at Feld Entertainment!



ENTERTAINMENT®

DANGARR!



“The Story of Tsing-Tsu” Ice Capades 1975-1976 East Coast Tour

“You will always be my Tsing-Tsu!”

Love, Ken

champions [and last year's ITNY honorees], were stars of the show, and JoJo and Sarah roomed together. "I loved studying Sarah, watching how she observed life," recalls JoJo. "She saw things with an artistic slant — so unique. In everything, even her make-up. On the ice, she never did things in an expected way, she was relentless in pursuit of creative expression. We were ideal roommates, because we were both very diligent about our work, and appreciated and valued what we were doing. We didn't take things for granted. Sometimes we'd talk into the wee hours of the night."

JoJo makes an interesting point: "When you do as many shows a week as we were doing in Ice Capades, you don't usually watch the other skaters perform. But Sarah's skating was so fascinating, a lot of us made a point to watch her. She was different, mesmerizing. Sometimes I'd see her in tears if her performance hadn't been perfect, she was really tough on herself. That's one of the things that made her great, I think." In later years, Kawahara had a reputation as quite a task-master. "Champion or chorus kid, Sarah pushes you till you get

it," notes JoJo approvingly.

Touring with Ice Capades was an arduous, invaluable education in discipline, endurance and observing audience response to skaters' routines. "When creating a program for a competitive skater, you have the judges in mind," notes Sarah. "In professional skating, you have the audience in mind." From the beginning, Sarah's goal, with all skaters she worked with, was distinct: "I love to bring skaters to a place they weren't when they started with me."

JoJo Starbuck recalls, "When Sarah created a solo for me, it was *really* hard, a total departure from everything I'd known. Everything was unique, a new challenge. The experience was well worth it."

"I was very lucky from the beginning," reflects Sarah, recalling JoJo and then Peggy Fleming's entrance into her life. "Peggy changed my professional life," states Sarah. Fleming saw Sarah perform, and recognized the similarity in their styles. "I did a piece for her when she was a guest-star in Ice Capades," recalls Sarah. Fleming had her own show, "Evening on Ice," and asked Sarah to choreograph the entire production.

"It was a major step in my career," recalls Sarah. "Everyone wanted to work with me after that." Future endeavors included, with producer (and former competitive skater) Willy Bietak, "Fantasy on Ice," starring Dorothy Hamill, Babilonia and Gardner, and Brian Pockar. She created choreography for Robin Cousins, Charlie Tickner and legendary John Curry. Still in her prime as a performer, she skated in Curry's TV special, "Peter and The Wolf," and in Toller Cranston's "Strawberry Ice."

In '86, Kawahara returned to Ice Capades as head choreographer, a daunting assignment. Her approach, and philosophy, remained simple: "Just do it." She viewed the challenge on a mathematical level: "With groups of people, you utilize lots of math — multiples, shapes, getting it lyrically..." She never did things in an expected way — "expect the unexpected" might have been her motto.

Kawahara observes that today, as far as competitive skating is concerned, "It's *all* about math and numbers. It's as though the system is trying to take the human factor out of it. The individual who practices the



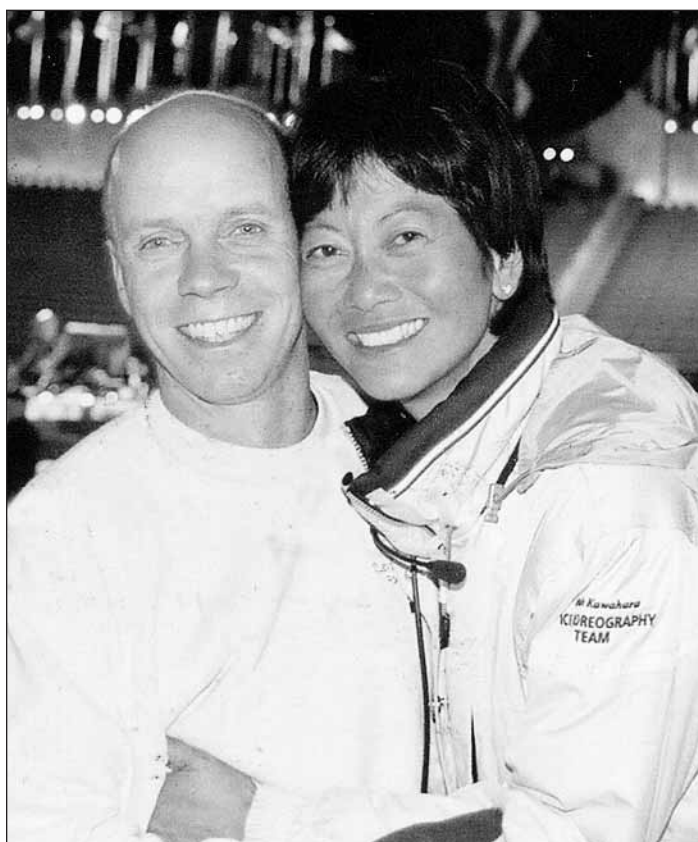


Congratulations to
Sarah Kawahara, Peter Eurich
and Ice Theatre of New York

Palmer Baker



Banff skating group.



Sarah with Scott Hamilton at the 2002 Winter Olympics.

smartest math in competition will win — if there's not enough content, the skater will lose."

In '86, another milestone for Kawahara: Scott Hamilton entered her life. America's reigning male superstar-on-ice was faced with a professional dilemma: he needed to inject fresh perspective into his work; he didn't want to skate programs similar to those of his competitors. World Professional competition was his current venue, and Sarah observed that his programs "didn't have a point of view." Being cute and funny was fine, but technical expertise had to be properly displayed within that context to win the competitions.

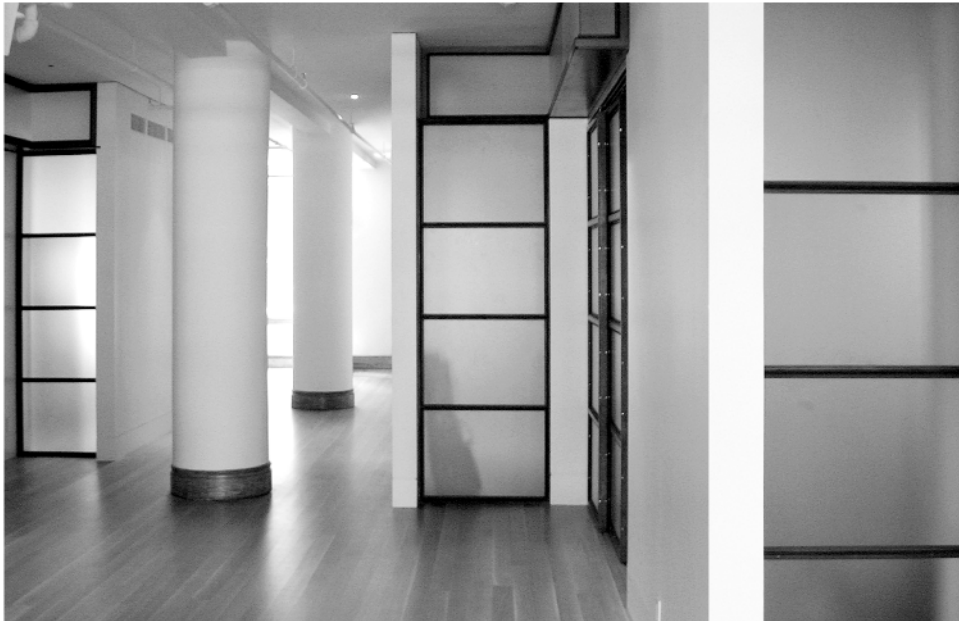
"It takes a long time to handle [Sarah's] way of movement," noted Hamilton. His stamina was put to the test, but his virtuosity emerged as never before. Their collaboration produced the desired results — a successful re-invention of Scott Hamilton. "I owe Sarah my entire professional career," he wrote in his autobiography. He has described Sarah bluntly: "She's a genius." They remain devoted friends.

In '89, performing programs created for him by Kawahara, Christopher Bowman won the U.S. Nationals, and was runner-up that year at Worlds. In '93, she devised Chen Lu's programs. That year, the USFSA Coach's Committee awarded Sarah the prestigious Paul McGrath Award, in recognition of her unique choreography.

Where does her inspiration spring from? "Everywhere. I draw from patterns in nature — the sun coming through the leaves, shadows when a cloud hits the rolling hills, colors and textures — the white windmills in California — the vast horizon — I choreograph so movements are a series of moving pictures..."

GUGGENHEIM

BONE/LEVINE ARCHITECTS
ARE PROUD SPONSORS OF
THE ICE THEATRE OF NEW YORK
HONORING
SARAH KAWAHARA



SOHO LOFT - MANHATTAN, NY

BONE/LEVINE ARCHITECTS 561 BROADWAY SUITE 8D
NEW YORK, NEW YORK 10012 212-219-1038 WWW.BONELEVINE.NET

In 2000, she began working on a project that, in sheer scope, was a breathtaking challenge on all levels: choreographing the opening and closing ceremonies for the 2002 Olympics. "It was the kind of project that takes over your life, but I never felt I was drowning," she recalls. "It was a positive, complex experience — very, very interesting." She won an Emmy for her efforts.

One can understand why, in 2006, filmmakers Josh Gordon and Will Speck chose Sarah for a seemingly impossible task: to create the illusion of "real," i.e. believable skating routines *et al.* for a major motion picture featuring the greatest cast of non-skaters since Joan Crawford and James Stewart in "Ice Follies of 1939." "Blades of Glory," written by Jeff Cox, Craig Cox, John Altschuler and Dave Krinsky, was contemporary comedy at its broadest. Set in the world of highest-level competitive figure skating, Will Ferrell and Jon Heder toplined the cast. Kawahara describes the challenge of creating Olympic-caliber choreography for Ferrell and Heder — not only non-figure skaters but each over six

feet tall — equivalent to "doing choreography for the Marx Brothers."

She advised the filmmakers right off the bat that their film would be outdated before it was released: "You utilize the old scoring system!" "Who cares?" they replied. The new system had unfortunately stripped away the suspense, and transparency, of the "old" system.

The film, one of the big hits of 2007, won plaudits from many critics, who took special note of its savvy skating sequences. Kawahara could add the medium of motion pictures to her resumé.

Sarah continues to demonstrate her versatility: she works with the Miami synchronized skating program, choreographed Feld Entertainment's "Anastasia on Ice," and the opening and closing numbers of Tom Collins's "Champions on Ice." She continues to create for competitive as well as professional skaters and one of her goals is to recreate, on film, under her direction, favorite routines she has devised over the years.

She hasn't sacrificed a private life. Married to Jamie Alcroft, of the popular

comedy team "Mack and Jamie," the couple reside in California and have three children: Alyce, Haley and Thatcher. The two daughters, twenty and fourteen, are headed for careers in the arts; the son, twelve, is passionate about baseball.

"Sarah is an ideal choice for Ice Theater's annual award," states ITNY founder Moira North. "There are no boundaries stifling her creativity; she pushes the envelope, always, and the results benefit and inspire all of us. The art of Sarah Kawahara — her capacity for innovation — has advanced the art of skating. Sarah, for all you have accomplished, and will accomplish, on and off the ice, we happily salute you."

© 2007 Edward Z. Epstein

EDWARD Z. EPSTEIN is author of twenty books, including "BORN TO SKATE: The Michelle Kwan Story" (Ballantine). Paul Newman and Joanne Woodward, Mia Farrow, Jane Wyman, Lucille Ball and Jennifer Jones are among his other subjects. A lifelong figure skating enthusiast, Epstein is a former Middle-Atlantic States Novice champion. His biographical essay on Sonja Henie was published by "Scandinavian Review," and he helped organize a festival of Henie's films for New York's Museum of Modern Art (MOMA). He wrote the official Museum notes for the series. Epstein is a graduate of NYU.



Keeping Ice Theatre in the Spotlight.

Scott Schwartz

Graphic Design

917.533.7208

Scott@ScottSchwartzDesign.com

Invites | Postcards | Newsletters | Journals | Signage | Stationary | Advertisements

Peter Eurich: Transitions

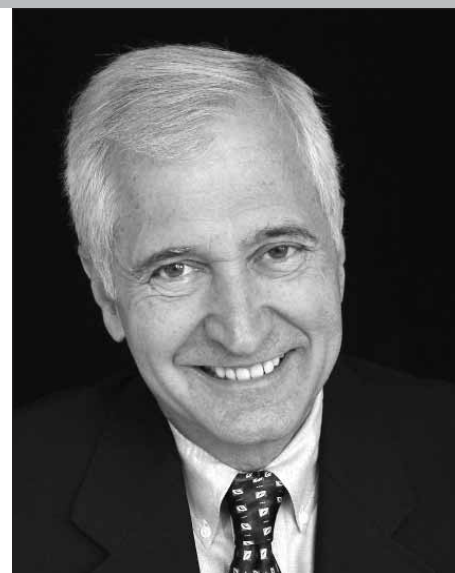
by EDWARD Z. EPSTEIN

His passion for skating did *not* begin in childhood. Quite the contrary. He graduated from the Wharton School of the University of Pennsylvania, then spent twenty-eight years as an executive at IBM, in their New York and German offices. After taking early retirement, he set out in a completely new direction. He entered an ashram in the Berkshires, where he studied yoga and various forms of meditation. When he returned to New York City, he met a friend who had taken up skating. "Why don't you try it?" she suggested, "it's fun and it's challenging." It was 1996, Peter tried it and has loved it ever since.

He became fascinated by ice dancing, and began lessons with Nina Newby, for-

mer Ice Theatre performer. With his skating partner, under Newby's tutelage, the couple won the pre-Bronze level adult nationals, and competed in subsequent competitions at a higher level. He also became an original member of "Men in Sync," the synchronized skating team established by Newby. "We were a novelty and good competitors," recalls Peter. Despite ample publicity, including a major piece in *The New York Times*, "it was impossible to keep a team of ten men together for any length of time."

Peter skated frequently at Sky Rink, "during hours most people would be at work." One day he was approached by Moira North. "I was later told that Moira,

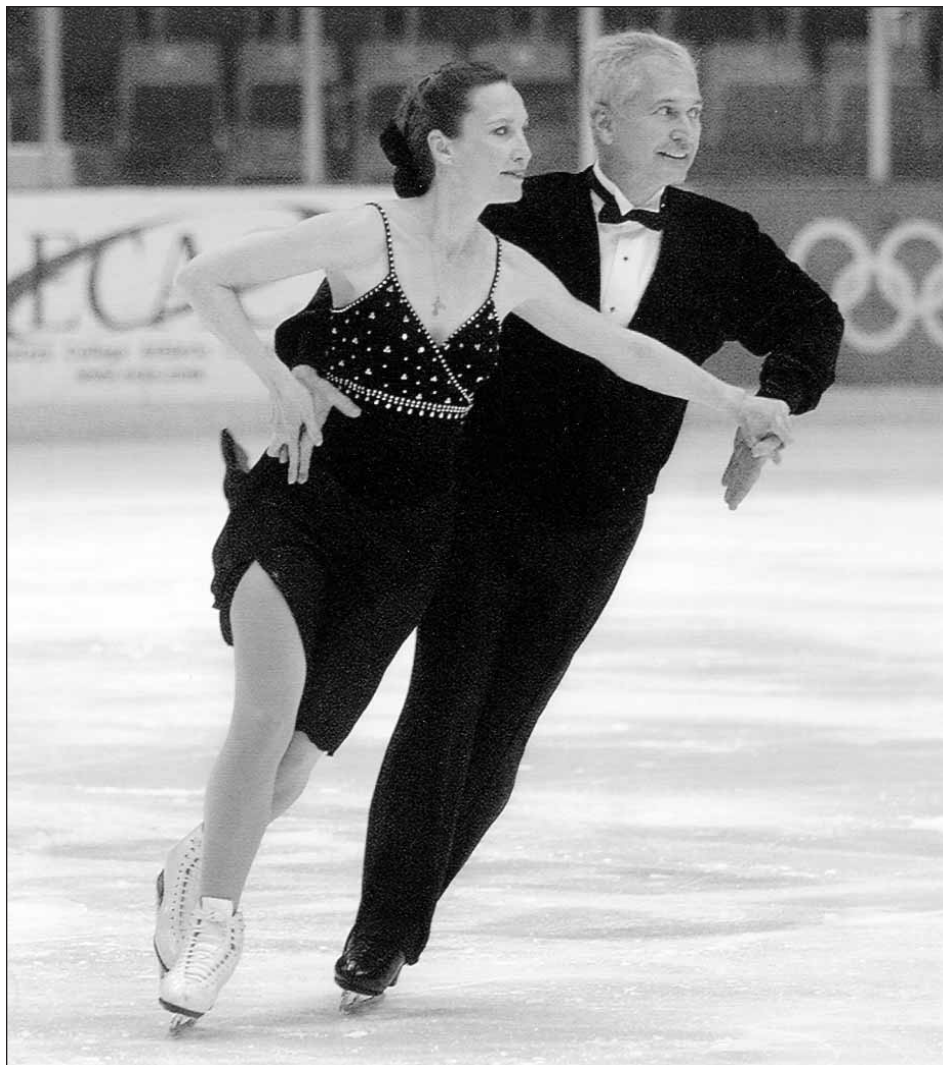


having seen me at the rink on many occasions, finally asked a fellow skater: 'Who is he?' She asked me if I'd like to be a volunteer at ITNY."

Moira's eye for talent was, as usual, on target. The association has lasted ten years, during which Peter has become an ITNY board member. "If ever there was a person who deserves our Ice Angel Award, it's Peter," states Moira. His expertise at problem-solving has proved invaluable. Among other accomplishments, he was instrumental in enabling ITNY to skate, on stage, on ice. "The first time was in Detroit," he recalls, and that almost didn't happen. Getting ice on stage was quite a challenge, one that had presented often insurmountable problems in the past. "If I had read John Curry's book before I undertook the project, I would never have gone forward with it. *Too many problems!*"

He worked on another undertaking with the Wollman Rink at Central Park, which led to his eventually becoming a vice president of the New York Skating Club. One of his responsibilities there is organizing and running the Middle-Atlantic championships.

Peter believes the time has come for another life transition. "It seems my passions run in ten-year arcs," he notes, and he's searching for an endeavor that will satisfy his interest in social issues. Meanwhile, he continues ice dancing, and attends Ice Dance weekends at the Princeton Skating Club in Princeton, New Jersey. "One night is devoted to ballroom dancing," he notes. His parents were ballroom dancers. Anyone want to take a bet on what at least one of his future passions will be?





Dear Peter,

Thank you for your selfless devotion
to Ice Theatre of New York.

You truly are an Ice Angel.

*Ice
Theatre
New York*

Board of Trustees

Congratulations Sarah



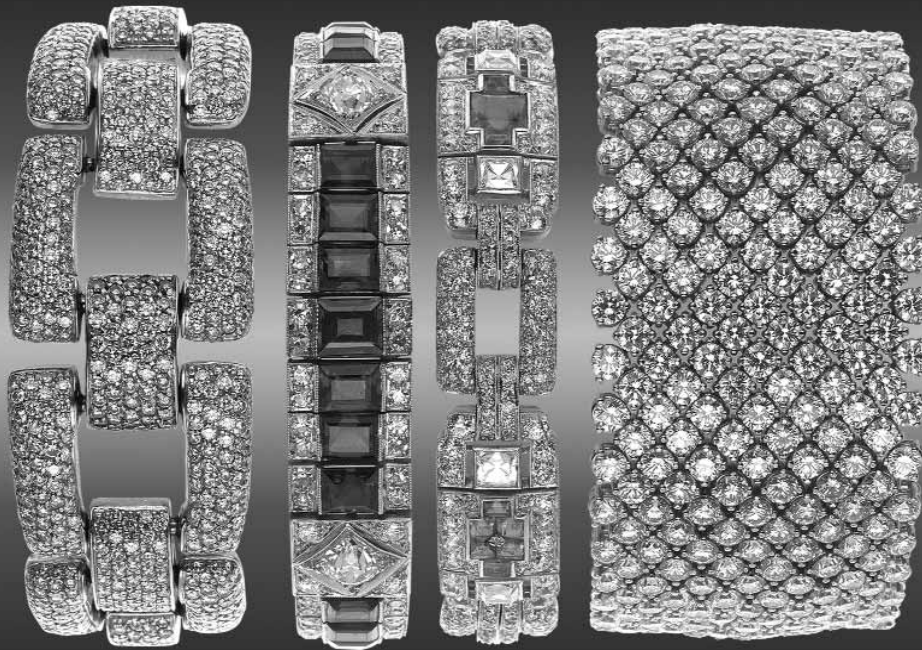
You're the Best!

Love,
Aja Zanova

WISH YOU MUCH
SUCCESS FOR YOUR
UPCOMING YEAR

Joan B. Kaufman Interiors,
A.S.I.D.

6 Dolma Road
Scarsdale, New York 10583
TEL (914) 723-6630
FAX (914) 723-0027



Armé

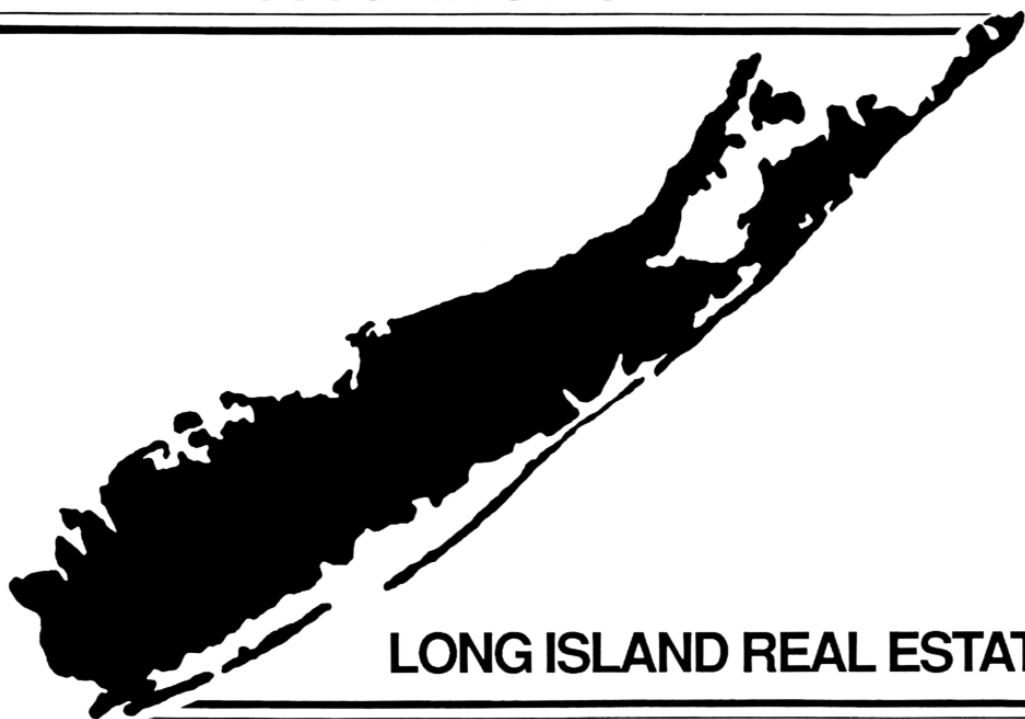
Marty Erdheim and Anne Raff

15 West 47th Street, Suite 405 NY, NY
212.302.6565 800.NYC.ARME

www.armegems.com

CONGRATULATIONS ICE THEATRE

STALLER ASSOCIATES INC.



LONG ISLAND REAL ESTATE

The Staller Family

Congratulations

to

Peter Eurich

Our Ice Angel and SCNY Vice President

The Skating Club of New York



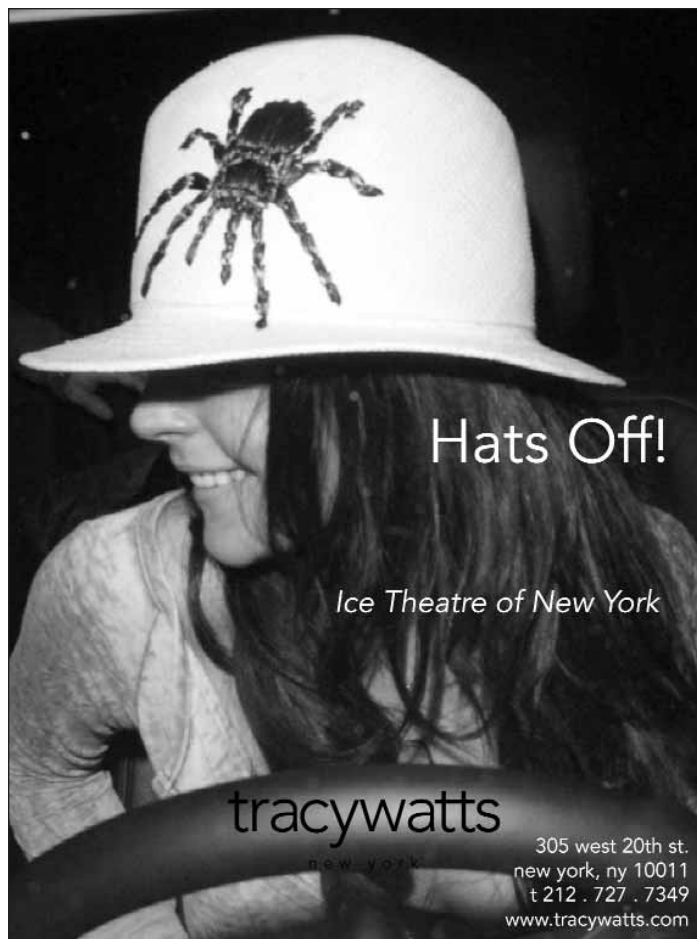
*Congratulations
Sarah!*

*from
Jim & David*

**WESTSIDE
SKATE & STICK**

174 FIFTH AVENUE 5TH FL. NY, NY
(212) 228-8400
www.wsskate.com

Skate Sharpening • Service & Repairs • Custom Orders



ROLEX IS
PROUD TO SUPPORT
THE ICE THEATRE OF
NEW YORK




ROLEX

ROLEX  OYSTER PERPETUAL, DATEJUST AND
PEARLMASTER ARE TRADEMARKS.

**Wishing you another great
season on the ice**

Christoff:Finio architecture
www.christofffinio.com

Kudos, Sarah.

Your energy, creativity, and vision have left their mark around the world. I'm glad to have had the opportunity to work with you for the Japan Show.

...and special thanks, Peter, for your dedication and tireless work that have helped make ITNY the success that it is!

Denise Beaumont



Morrison & Foerster
Proudly Supports
Ice Theatre of New York

MORRISON | FOERSTER

www.mofo.com

Congratulations to
Sarah Kawahara and Peter Eurich

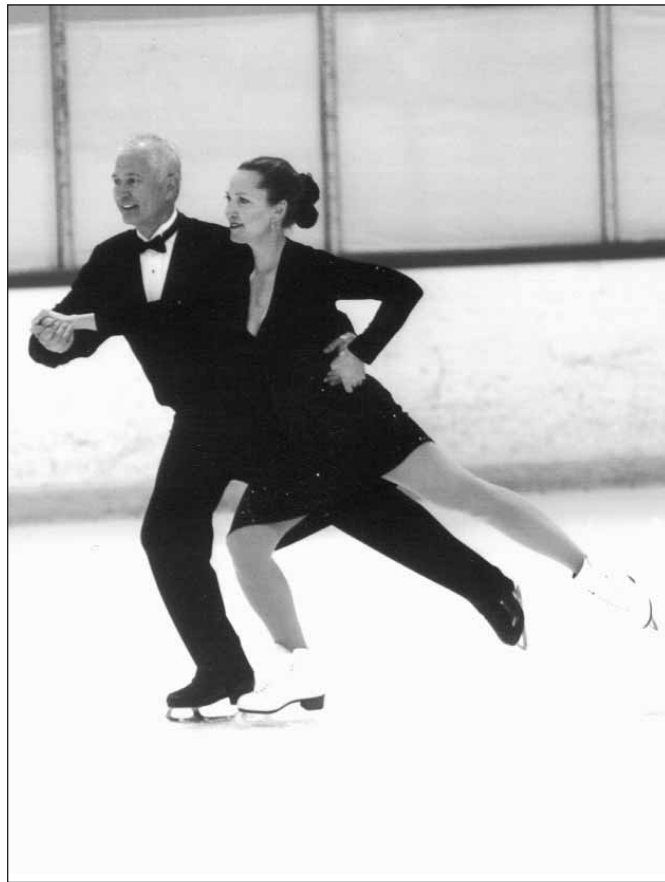


and to Ice Theatre of New York
for their wonderful accomplishments.

Barbara & Bill Candee

Congratulations
Peter on a
well-deserved
honor.

Kathy & Phil Feuerstein



The successes you have earned have
touched so many lives. Thank you for
sharing your talent with this world.

You are beyond exquisite!

All my love, Joanna Ng

To the man whose dance
card is always filled,

Congratulations
Peter!

Mark Schwartz



Thank you Sarah

For so many years of your wonderful contributions to so many of our shows!





Is pleased to support

**Ice Theatre of
New York**



**Keep the
pterodactyl flying!**

**In appreciation for the
innovative work of
Ice Theatre of New York**

Congratulations

Sarah Kawahara and Peter Eurich

**Callan, Koster, Brady & Brennan, LLP
Counselors and Attorneys at Law**

One Whitehall Street
New York, NY 10004

(212) 248-8800

Fax: (212) 248-6815

www.ckbbllaw.com

VERA WANG

Congratulations to Sarah Kawahara

afa Asset Services, Inc.

150 East Fifty-Eighth Street, 27th Floor
New York, New York 10155-2798
Phone 212-223-0500
Fax 212-371-4654

Amos Kaminski, President
Sherry Frankel, Vice President
Marie Torre, Assistant

Congratulations Sarah!



CONGRATULATIONS

Ice Theatre of New York!

Keith C. Champagne



Congratulations to Sarah Kawahara

The Hughes Family

John • Amy • Rebecca • David • Matthew
Sarah • Emily • Taylor • Natalie • Alexandra

CONGRATULATIONS SARAH!

Thank you for all that you
have contributed to the
Miami University Skating Program!



With love from the MU Skating Family



To Sarah!

You did some of our most creative and enjoyable work.
Thank you for encouraging us to think
way out of the box! Congratulations!

— Tai and Randy

To Ice Theatre of New York
and Sarah Kawahara

Congratulations
in celebration of
your creativity on ice.

Robin Wagner



In Honor of
Dedicated skaters
Everywhere !

Michel Mercure
AD+





THE SKYLINERS SYNCHRONIZED SKATING TEAMS

congratulate the

Ice Theatre of New York

www.SkylinersSynchro.com

**Congratulations
Sarah!**

**You are
magnificent!**

**Love,
Mindy Hall**



Marni & the Sky Rink
Ensemble Class salute
Ice Theatre
for Innovative Artistry

Congratulations to
Sarah Kawahara,
Peter Eurich and
Ice Theatre of New York



380 MOTOR PARKWAY
HAUPPAUGE NEW YORK 11788
(631) 851-8860

Sarah

My Client ...

My Friend

Phyllis Rab Elkins

To Moira,

*When ITNY counts
its blessings —
it counts you twice...*

Charles A. Kerner CPA
(212) 675-4030



**CONGRATULATIONS
PETER**

**We've always admired you
on and off the ice.**


The Weisblum Family

We salute the Ice Theatre of New York and tonight's honorees, Sarah Kawahara and Peter Eurich



The Right Broker Makes All The Difference

Uptown: 924 Madison Avenue, New York, NY 10021 • 212-570-2440

 **Downtown:** 340 West 23rd Street, New York, NY 10011 • 212-243-4000

Tribeca: 246 West Broadway, New York, NY 10013 • 212-941-8420

Stribling .com

Cooperatives • Condominiums • Townhouses • Lofts • Sales & Rentals

DIGITAL AGE salutes ICE THEATRE OF NEW YORK

DIGITAL AGE, a TV program, covers the impact of the Net, computer and other forms of digitalization on American life.

DIGITAL AGE is on WNYE-TV/NYC TV, Channel 25 in New York City; cable stations in Long Island, Westchester and Connecticut; DirecTV's Ch. 888 (NJ), DirecTV's Ch. 25 (NY and CT) and Dish-TV. It is podcast on www.npr.com and viewed from www.digitalage.com.

Sundays at 5:00 PM

Host and Producer

James C. Goodale

Congratulations Peter!
Your commitment,
energy and passion
for ice dance and
the Ice Theatre of New York
is inspiring.

You truly are an Ice Angel!
James Schilling

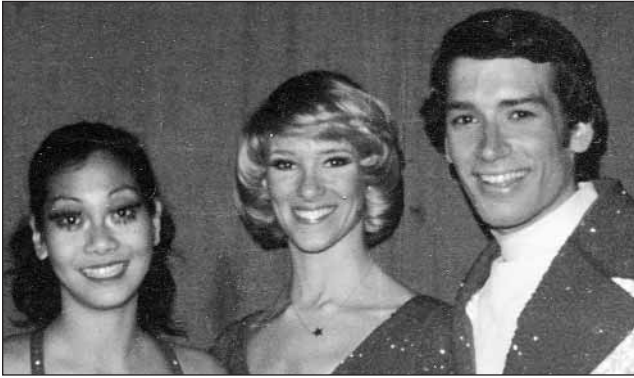
In recognition of
your commitment and
accomplishments,
congratulations to
Peter Eurich!

John Fitzgerald Acosta
of Smith Barney
212.643.5842

One if by Land Two if by Sea



17 Barrow Street • New York, NY 10014
(212) 228-0822 FAX (212) 206-7855
www.oneifbyland.com



Dear Sarah,

What a joy to watch you explore the World of Skating, creating, reinventing and contributing so much for all future skaters to aspire to! From Atlantic City to Sabi Sabi, Africa, I've loved sharing rehearsals, dressing rooms and life with you my dear friend. Here's to at least another 35 years more!

Love, JoJo



STAN'S SKATE SHOP

INC.



STAN BELLIVEAU—SKATE SPECIALIST

Member Of: P.S.A. • I.S.I. • U.S.F.S.A. • MIRMA

& STAN'S SKATE SHARPENING SHOP

THE RINX HOURS
OCTOBER TO MARCH

Monday through Friday • 3pm to 10pm
Saturday & Sunday • 10am to 10pm

APRIL TO SEPTEMBER
Call For Stan's Hours

ALSO BY APPOINTMENT • CLOSED ALL HOLIDAYS

THE RINX-HIDDEN POND PARK
660 Terry Road • Hauppauge, New York, 11778
(631) 232-3222, Extension 228

HOME ADDRESS: 662 Bay 6th Street • West Islip, NY 11795
HOME PHONE: (631) 587-1658 • CELL: (631) 871-4361
CAR: (347) 675-0030

Congratulations to Sarah Kawahara

Caran Properties



Licensed Real Estate Brokers

**150 East 58th Street
New York, New York 10155
Phone 212-207-8118
Fax 212-207-8976
www.caranproperties.com**

**Sherry Frankel, President
Martha Goupit, Managing Director
Rebecca Mason, Executive Director**

Management • Residential Brokerage • Financing

Congratulations to
creative choreographer **Sarah Kawahara**
and Ice Angel **Peter Eurich**



Ice Theatre is delighted to
have you as this year's Honorees.

Ruth Legon



**Congratulations to
Peter Eurich
and to
Ice Theatre of New York**

**Akst & Akst
150 East 58th Street
New York, New York 10155
(212) 308-3999
Specialists in Immigration Law**

**CONGRATULATIONS
ICE THEATRE!**

WONDERLAND
O N I C E

AT CHELSEA PIERS

OFFERING A FULL LINE OF
FIGURE SKATING AND HOCKEY
APPAREL AND EQUIPMENT

Sky Rink at Chelsea Piers
Pier 61 – New York, NY 10011

Tel 212.824.4096

Fax 212.336.6197

CONGRATULATIONS AND BEST WISHES
FOR CONTINUED SUCCESS

to
ITNY

FROM your friends at

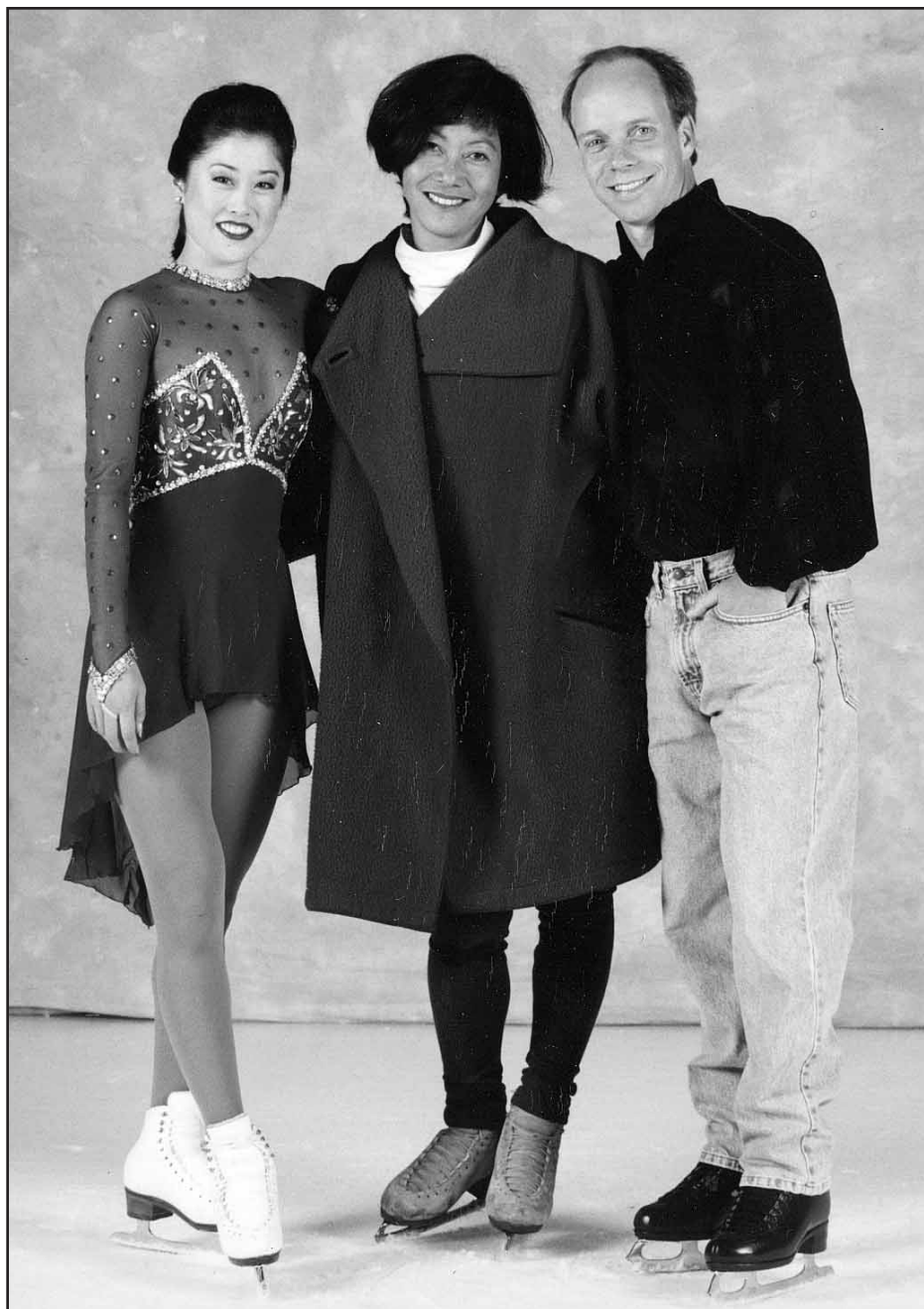


**The Martha Mason Hill
Memorial Foundation, Inc.**

**"Promoting Higher Education"
Helping Build The Next Generation Of
Leaders**

**2013 Clearwood Drive
Mitchellville, MD 20721
ajhstith@msn.com www.mmhmf.org**

*James H. Stith, Chairman of the Board
Alberta J. Hill Stith, President
Shirley A. Hill Baugh, Secretary/Treasurer*



CONGRATULATIONS TO
SARAH KAWAHARA, PETER EURICH
AND ICE THEATRE OF NEW YORK

MARILYN, JOE AND JOY KASPUTYS



**The Rinx offers a
full compliment of
Figure Skating programs.**

Group or Private Lessons

Learn to Skate

Freestyle

Skating School

U.S.F.S.A. and I.S.I.

The Rinx at Hidden Pond Park

660 Terry Road

Hauppauge, NY 11788

631-232-3222

www.TheRinx.com

We wish we could be
with you tonight.
You changed our lives
and we are grateful.
You are the ultimate
ice dancer.
Congratulations for
this honor
— you deserve it.
Have an amazing evening.

Love,
Jamie, Cindy, and Doug

Bravo,
Sarah
and Peter

Stephen G. Epstein
Edward Z. Epstein

Congratulations to
The Ice Theatre of New York
and
Sarah Kawahara
for your creative contributions
to the art of figure skating.



With best wishes for continued success,
Bob and Debbie Gordon

Chantiles Vigneault Casting

**Commercials, Film, Television,
Theater, Voice-overs**

39 West 19th Street, 12th Fl.
New York, NY 10011

212-924-CAST (2278) tel
866-924-2278 toll free
212-924-2484 fax
www.CVCasting.com

THE DEVON MANAGEMENT GROUP, INC.

Salutes
Peter Eurich
for his
Dedication and Contribution
to
The Ice Theatre of New York
And
Ice Skating

MANAGEMENT CONSULTING TO THE FIGURE SKATING COMMUNITY

CHIP CONNELL
Chipster@Devonmgmt.com
(732) 530-2677



Congratulations Peter!
We always knew, you are the best!
We love you!



Congrats Sarah and Peter!

Annie Goodman

Annie & Company
Needlepoint
Knitting

annie@annieandco.com
www.annieandco.com

Annie & Company
Needlepoint
1325 Madison Avenue
New York, NY 10128
Tel 212-360-7266
888-806-7200

Annie & Company
Knitting
1325 Madison Avenue
New York, NY 10128
Tel 212-289-2944
877-289-5648

*Be inspired
to skate like Sarah...*

Congratulations Lloyd. Skate for fun!

*With love,
Mom
Angela Ting*

Congatulation
Ice Theatre



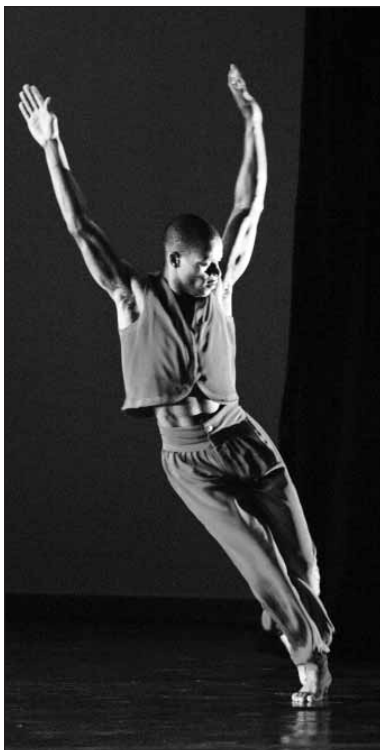
Dr. Rena Clarkson
salutes
all the smiles
on the ice.



CONGRATULATIONS
Sarah Kawahara, Peter Eurich
and
Ice Theatre of New York

Roland W. Betts
Tom A. Bernstein
David A. Tewksbury

Chelsea Piers Management



Saluting
Peter Eurich
for his
exemplary
service to the
Ice Theatre
of New York

From Board
Officer to
Board Officer

Cynthia Heelan

Board Chair, Battery Dance Company



Courtney Carroll, M.A. Sport Psychology

Performance Enhancement Training for Athletes

Courtney will help you with:

- Balance winning and having fun
- Improve confidence and motivation
- Learn concentration, focus, and emotional control skills
- Overcome pressure and performance anxiety
- Combat negative thinking
- Enhance performance through visual imagery
- Cope with setbacks and mistakes
- Prevent Burnout
- Learn Relaxation Techniques

917.880.9849 www.growththroughsports.com



THE NATION'S
PREMIER
ICE DANCE
ENSEMBLE

*Ice
Theatre
of
New York*

2007 HOME SEASON PERFORMANCES AT SKY RINK

Sky Rink at Chelsea Piers
November 1-3, 2007 • 7pm

FEATURING WORLD PREMIERE
OF NEW PIECES

by Peter diFalco, David Liu and
Douglas Webster and ITNY premiere of
"After All" by Twyla Tharp.

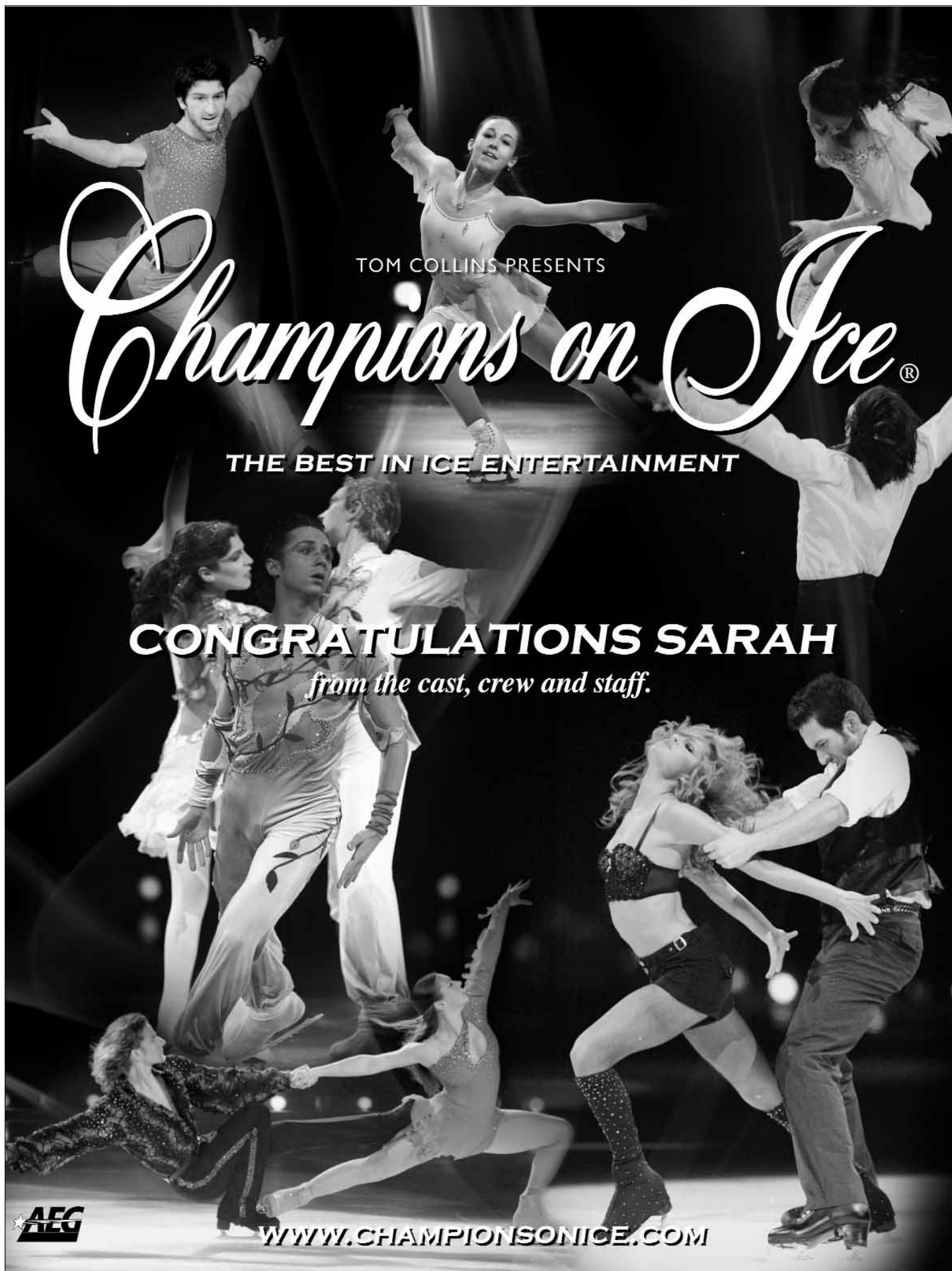
Tickets: \$25. For tickets call 212.929.5811
or purchase online at www.icetheatre.org

CONGRATULATIONS PETER EURICH!

Thank you for all you've done
for skating in New York City

Wollman Rink
TRUMP
Central Park

From everyone at the
Wollman Rink Skating School



TOM COLLINS PRESENTS

Champions on Ice®

THE BEST IN ICE ENTERTAINMENT

CONGRATULATIONS SARAH
from the cast, crew and staff.

AEG

WWW.CHAMPIONSONICE.COM

Warmest congratulations
to Sarah Kawahara, Peter Eurich
and the Ice Theatre of New York



The Ernst/Katzman Family

Permanent,
Seasonal,
and Portable
Ice Rinks -
Worldwide.



Proudly Presenting:

*The Pond at Bryant Park
Manhattan*

*Newport Skates
Jersey City, N.J.*

*The Bubble at The Rinx
Hauppauge, L.I.*

*We are very happy
to celebrate together with
Ice Theatre of New York
the remarkable
and superbly inspiring
Sarah Kawahara,
and the enthusiasm and
dedication of
Peter Eurich.*



*Congratulations
and our Best Wishes
to the new Co-Artistic Director
of Ice Theatre of New York--
the passionate,
innovative, and
uniquely-talented
David Liu.*



*To Moira North
and her creative,
energetic team of skaters—
we wish you all a
wonderful Skating Season
of great achievements!*

Mike Clayton & Lena Gottshall



Copyright © Lena Gottshall

www.IceRinkEvents.com